

## STRAT-O-MATIC REVIEW

Devoted exclusively to the  
Strat-O-Matic Game fans, with  
the consent of the Strat-O-  
Matic Game Co.

VOL. VII-8, November, 1977 50¢

### *Dice Shakin' Higher Education-Style*

## Marshall Continues As S-O-M Hotspot

Sounds of dice are still echoing from the halls of hallowed learning at Marshall University, Huntington, WV. Three baseball seasons and two football have been completed by a band of S-O-M fanatics, including a number of graduate students, particularly in the English department.

The best known baseball league [Permanent Marshall University Draft Strat-O-Matic League], put the finishing touches on its second and third seasons last school year and is ready to embark on more.

The PMU (Feb., 1977 Review) was founded by Myron Pecora, who went on to win three league titles and compile a career record of 144-31. He has left school and working full-time out of the Huntington area, however, so his exploits are only a memory.

That first league, many of you will remember, was a 24-team, actual teams replay. But since that initial season, the PMU has gone to a 12-member draft league setup, expanded the season to 54 games (instead of 40), developed an elaborate constitution (complete with fines) and devised a method of drafting players by means of bidding on them (each manager is given \$1.5 million).

The league's first draft was interesting, with Larry Bowa, surprisingly, going for a whopping \$288,000, followed by Mike Schmidt (\$280,000, Carlton Fisk [\$276,000] and Joe Morgan [\$250,000]). Some of the managers, obviously, didn't have much to bid on the remaining 24 players needed to fill out a roster. Some players went very cheap in comparison, since some of the big spenders' bankrolls were depleted in a hurry. Frank Tanana went for \$41,00, George Scott [\$40,000] and Jim Rice [\$65,000].

[continued on next page]

Minimum bid was \$17,000 and such players as George Brett, Steve Garvey, Joe Rudi, Bill North, Lou Brock and Dave Winfield fetched that low price. The first draft was held in Sept., 1976. The second, Feb., 1977, (each manager was given an additional \$1.5 million plus 12 players could be protected) found talent at a premium. Mark [The Bird] Fidrych went for a whopping \$800,000. Even Roy White sold for \$400,000.

#### FIRST NO-HITTER

That second season witnessed the league's first no-hitter in its two-year, 1000-plus games history. Wilbur Wood [1976 card] pitched it for the Charleston Yankees, whose manager Harold Meade finished second to Pecora's Falls View Tigers and won him Manager of the Year honors.

It should also be mentioned that Dan Saunders has taken over the duties of Presiding Officer of the PMU, with Don Lee Vice Presiding Officer. And, the PMU, it turns out, is just one of the many "going" leagues based in Huntington (at last count there were 15), a "real hot-spot when it comes to Strat-O-Mania."

The league also gives out certificates of achievements to those members who complete their seasons plus glittering trophies are presented to the first and second-place teams at the conclusion of each season.

#### A LOOK AT THE MANAGERIAL LINEUP

Here are thumbnail sketches of the managers and their teams currently in the PMU, or those who completed the last season:

Frank Dickson, Number 12 Team, 28, graduate student...last team to join league and had poor personnel as result...good manager with five years of S-O-M experience...not-so-good general manager as second season drafting didn't improve team's lot. Overall record: 44-64.

Ron Siders, New Haven Thundering Nerds...hard-luck manager...great hitting, poor pitching first season; great pitching, poor hitting the second...Steve Garvey, Ron Reed only consistent players both years. Record: 50-58.

Bryan Deem, Harrisville Gators...Manager of Year first season after taking "lousy" team, in estimation of others, to title...Faltered in second season...Lou Brock, Catfish Hunter and Marty Pattin were the franchise. Record: 51-57.

Howard Henry, Cabtown-Charleston Yankees...good manager who platooned well...disappeared three-quarters of way through season and was never heard from again, however. Record: 0-54 (first season).

Harold Meade, rookie Manager of Year, finished second in league...fine platooners...had great hitting as a result of maneuvers, featuring second season home run king Graig Nettles (14), Hal McRae, Oscar Gamble and John Grubb. Record: 35-19 (second season; guided Charleston Yankees).

Mike Workman, Mud Fork Mud Dobbers...ran a revolving door setup, trading anyone to anybody at any time...finished second in first draft season, but trading tactics caught up with him during second as he compiled worst record in league's history, 17-37...Bob Watson, Al Oliver, Larry Bowa and John Candelaria were his mainstays--and about only players who weren't traded. Record: 47-61.

J.W. Bowen, Hinton Hard Throwers...good pitching coach, but hitting attack was anemic...Randy Jones and Ed Figueroa were best of moundsmen, while Willie Montanez, Bert Campaneris, Ron Cey and Lyman Bostock supplied most of the punch. Record: 50-58.

Myron Pecora, 22, Falls View Tigers, married and graduate assistant in English department during league play...built a dynasty: first season did heavy platooning, plus had great pitching; second season relied on super individuals to win championship again...so deep first season that between campaigns traded away Rico Carty, George Scott, Carlton Fisk, Jim Rice, Don Sutton, Bobby Grich and Doug Rau, but for Bill Madlock, Rod Carew, George Foster, Gene Tenace and Gaylord Perry...Pitching featured Tom Seaver, Frank Tanane and Jim Palmer--enough said!...team stole 163 bases second season. Record: 88-20.

Don Lee, 25, Greenwich Mets, married, graduate assistant in English department...took Mets over when they 7-15 first season, guided them to 29-25 mark.

(Continued on page 5 )



## New Pass-Rush Chart Proposed By Gamer

BY BILL KUTSCHER  
Denver, CO

I have been a Strat-O-Matic Football fan since 1970. I have been extremely pleased with all of the changes/improvements over the years. However, I have never been satisfied with the pass-rush chart. It was too easy to take advantage of.

For example, with a blocking rating of 4 against a rush rating of 5, you have 8 chances out of 36 of connecting long. But blitz one linebacker and suddenly you have zero chances. On every third and long play, with the stated ratings, the offense coach can expect to see one and only one linebacker blitzing.

What was needed was a chart with more uniformity; and one that could not be taken advantage of. When I developed my revolutionary new chart, I researched the basic percentages of the regular chart. But now when you blitz say one linebacker, you reduce equally the chances for an incompletion, short pass completion, or long pass completion.

One further note is that with my chart the minimum block/rush rating is now 0; and, the maximum is 6. Thus, a team with a 1 pass rush rating cannot convert to a 3-4 or 3-3-5 defense without penalty.

### HOW THE CHART WORKS

Step 1: Take the Offensive Pass Block Rating and subtract from it the DEFENSIVE Pass Rush Rating. This will give you the NET RATING. Roll three dice and refer to the main body of the chart. The white die in the roll gives the distance of a sack if one occurs; otherwise it is ignored. If there is no blitz, you have your final result. If there is a blitz refer to Step 2, unless an interception or a sack has occurred (then the interception or sack is your final result).

Step 2: The NET RATING is again used to determine the chances that blitzing linebacker(s) will nullify the incompletion or completion as the case may be. For example, with a 4 block, 5 rush rating and one blitzing, you would look under Blitz One (\*) Net RTG -1. Therefore there is a 2-5, 11, 12 chance of sacking the quarterback. Again roll all three dice with the white die determining the distance of the sack if there is one.

Another example: Block 5, rush 1, three blitzing. There would be a 2-10 chance of a sack; an 11 would result in an incompletion; and, a 12 would give you the result arrived at in Step 1. This is the one part where I tampered with the percentages on the regular chart, since obviously on the original blitzing three linebackers guarantees a sack or interception.

The chart, it should be noted, will not alter the basic percentages of the game.

### PASS RUSH CHART

#### Step 1

NET RTG	2	3	4	5	6	7	8	9	10	11	12
+6	-					+17	+13,33	+16	+11,36		+12
+5	-					+14	+13,33	+16	+11,36		+15
+4	-					+14	+13,33	+16	+11,36		
+3	-	@QS				+13,33	+14	+16		+11,35	
+2	- I***			@QS		+13,33	+12	+16			+15,36
+1	- I**	@QS		@QS		+12,32	+14		+16		+13,34
0	- I*			@QS		+12,32	+14	@QS		+16	+11,30
-1	- I	@QS		@QS		+14,34	+11	@QS		+16	

(continued on next page)



Step 1 Continued:

4

NET	2	3	4	5	6	7	8	9	10	11	12
RTG											
-2 -	I	@QS		@QS		+14,33	+11	@QS		@QS	+17
-3 -		@QS	@QS	@QS		+12	+14,34	@QS		I	+15
-4 -	@QS	@QS	@QS	@QS		+12	+15,33	@QS		I	
-5 -	@QS	@QS	@QS	@QS		+12	+14,32	@QS		I	@QS
-6		@QS	@QS	@QS		+12	+14,31	@QS	@QS	I	

#### Step 2

@QS	Blitz One (*)	Blitz Two (**)	Blitz Three (***)
1 -5	RTG @QS	RTG @QS	RTG @QS Inc
2 -6	+5,6 -	+5,6 2-4	+5,6 2-9 10
3 -7	+4 -	+4 2-5	+4 2-10 11
4 -8	+3 2,12	+3 2-6	+3 2-10,12 11
5 -9	+2 2-3,12	+2 2-6,8	+2 2-11 12
6 -10	+1 2-4,12	+1 2-7,11	+1 2-12 -
	0 2-4,11,12	0 2-7,11,12	0 2-12 -
	-1 2-5,11,12	-1 2-7,9	-1 2-12 -
	-2 2-6	-2 2-8	-2 2-12 -
	-3 2-7,12	-3 2-8,11	-3 2-12 -
	-4 2-7,9	-4 2-8,10-12	-4 2-12 -
	-5,-6 2-8	-5,-6 2-10	-5,-6 2-12 -

I (Distance): Short - Short gain  
Long - +34

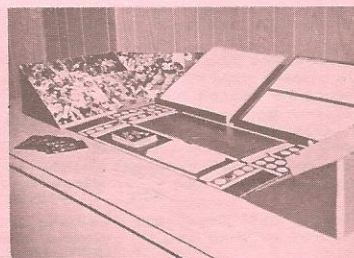
Key for main body of chart:

- + 16 - short pass complete 16, long pass incomplete.
- +11,36 - short pass complete 11, long pass complete 36.
- [blank]- incomplete.
- I - pass intercepted; see chart.(distance) above.
- I\*\* - pass intercepted with two blitzing; otherwise incomplete.
- @QS - quarterback sacked 4 yards plus roll of white die.

## Presenting: First College Football Stadium

Although Strat-O stadiums are proliferating [offshoots of Steve Schumacher's creative genius; Sept., 1977 Review], we've yet to run across one modeled after the college football game. That is until Dave Hill of Saskatoon, Sask., Canada, recently introduced his replica of the game in stadium form.

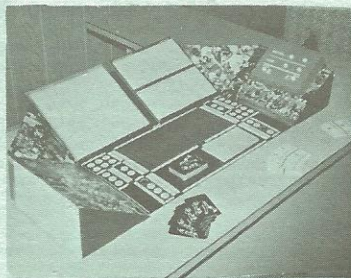
Dave, 18 and a college student at Saskatchewan, produced a stadium that included a scoreboard (from another, old electric football game), a grand-  
(Continued on next page)





stand that was constructed from cardboard and includes pictures from old sports magazines featuring college greats such as Tony Dorsett and Archie Griffin, and a back of a stadium that provides support for the two sets of team cards. The team cards, for example, are easily picked up since they hang over the top of the stadium--an improvement over trying to scrap them off a flat surface.

The whole complex wraps around the regular college football field and keeps everything neat as well as compact.



## S-O-M Scales Heights Of Higher Education

(Continued from page 2 )

...Got into playoffs first season, but weak hitting prevented repeat second time around...Toby Harrah led league in hitting first season with .369 mark... Other standout players were Mike Schmidt, Thurman Munson, Luis Tiant and Chris Chambliss. Record: 58-50.

Dan Saunders, 24, married, graduate assistant in math department...grabbed share of first-place in first season with his Thundering Aardvarks, but was eliminated from playoffs by upset at hands of Harrisville...Never in pennant race second season...paid high price for many players--thus weakening bench... Top players included Fred Lynn, Ken Griffey, Dave Cash, Nolan Ryan and Jon Matlack. Record: 53-55.

Pat Holbrook, 27, has master's degree, coach of Converse All-Stars... went through rebuilding season first campaign--but finished with respectable 27-27 log...exploded second year as team went 35-19 and won division championship...a good manager who did an even better job platooning his players...heart of team consisted of Ed Kranepool, Bake McBride, Richie Zisk, Bill North and pitchers Vida Blue and Bert Blyleven. Record: 62-46.

Perry Tilley, Shady Spring Tiger...fundamentally a sound manager...finished second two seasons in succession, thus qualifying for playoffs...attack was sparked by Rod Carew, Ted Simmons, Rusty Staub, Cesar Geronimo, while hill staff included Bill Campbell, "Count" Montefusco, "The Bird" Fidyrych and Dennis Eckersley. Record: 61-47.

Fred Neal, 24, graduate student, Yellow Spring Onamatapoiers, S-O-M vet of eight years, making him most experienced gamer...had horrendous first season attempting to build for future...led most of second season, however, until stricken by slump that caused team to tail off to disappointing 27-27... ..Dick Allen, Ron LeFlore, Ralph Garr, Dal Bando, Johnny Bench, John Hiller and Jerry Koosman were top players. Record: 49-59.

Standings:

### Fall 1976 (1975 cards)

Division I	Won-Lost	GB	Division II	Won-Lost	GB	Playoffs
Falls View	49-5	-	Greenwich	29-25	-	Harrisville d.
Mud Fork	30-24	19	Harrisville	29-25	-	Thundering, 2-1;
Shady Spring	30-24	19	New Haven	29-25	-	Greenwich d.
Converse	27-27	22	Thundering A's	29-25	-	New Haven, 2-0;
Hinton	26-28	23	Yellow Spring	22-32	7	Mud Fork d.
Number Twelve	24-30	25	Gab Town	0-54	29	Shady Spring, 2-0;

Greenwich d. Harrisville, 1-0. Semifinals: Falls Views d. Harrisville, 3-0;

Mud Fork d. Greenwich, 3-0. Finals: Falls View d. Mud Fork, 4-1.

(Continued on page 7 )



## Questions & Answers

6

Editor's note: Questions regarding individual and team ratings will not be answered in most cases, unless a mistake has been made. The game company cannot, for reasons of security, disclose its card-making formula, which would be necessary in some instances in order to answer such questions. If your question regarding ratings does not appear in the Review within four months after being sent, you may assume the rating is correct.

QUESTION: On Gino Cimoli's 1960 card with the Pittsburgh Pirates, it says "Flyball (cf)" on 3-9 but doesn't tell what the letter should be. What is the letter?

ANSWER: B.

\*\*\*\*\*

QUESTION: What is the result for 1-7 on 1962 Boog Powell's card with the Baltimore Orioles? It says, "Triple, Single\*\*".

ANSWER: Should be triple 1, Single\*\* 2-20.

\*\*\*\*\*

QUESTION: Why didn't Willie McCovey receive a 1976 season's card with the San Diego Padres? He batted 200-plus times. Why did Ron Fairly receive only a small amount of at-bats on his card when he batted much more than that shown?

ANSWER: According to Strat-O-Matic, McCovey didn't receive a card because he was released before the season ended. So S-O-M then took the 20 most representative players still on the team. In the case of Fairly, only his American League statistics were used.

\*\*\*\*\*

QUESTION: How will Tom Seaver's card next year be handled? Also, how will Dave Kingman be handled?

ANSWER: Seaver will be with Cincinnati and his statistics will be both those with the New York Mets (before the trade) and with the Reds. Regarding Kingman, who was with three clubs in 1977, he will likely be one of the extra players, using his National League stats.

\*\*\*\*\*

QUESTION: What should a person do if he (or she) receives a wrong team in an order? Does S-O-M reimburse a person for sending back an incorrect team, for postage?

ANSWER: Yes, send back the team and S-O-M will pay for the return postage.

\*\*\*\*\*

QUESTION: Why wasn't Darryl Dawkins included on the 76ers' roster in the latest basketball set?

ANSWER: Harvey Catchings and Caldwell Jones are the centers for the 76ers', both of whom logged more playing time during the regular-season than did Dawkins. Many people assume because Dawkins played so much against Portland in the NBA Finals, that he deserved a card. But it should be remembered that Catchings was the starting center until he was injured late in the season. He missed the playoffs.

\*\*\*\*\*

QUESTION: Why wasn't Jim Burton included with the 1975 Boston Red Sox, instead of Jim Willoughby? Burton pitched more innings and had a better earned run average.

ANSWER: Burton only pitched five more innings than Willoughby. It was strictly a matter of choice, according to S-O-M.

(continued on next page)



QUESTION: The following answers pertain to changes that should be made on the new S-O-M Football cards. These changes have been mentioned before, but it is important they be made so here they are again.

ANSWER: Change Walter Payton's card to read: Lineback No. 4 should be short gain (right) and +22 (wrong), and Lineback No. 8 should be +8 (right) and +8 (wrong).

New England End Run defensive card No. 10 should read FO, FO, FO. New England Lineback-Off Tackle defense No. 5 should read all the way across, F+1, 2-10, 12; +1, 11, until the last column (DT 2-men) which should read FO, 2-10, 12; 0, 11.

New England Lineback-Off Tackle defense No. 12 should read all the way across F+2, F+1, F+1, F+1, F-4, F-4.

Pittsburgh Lineback-Off Tackle No. 5 should read F+2, 2-10; +2, 11-12 (1-Man); F+2, 2-10; +2 11-12 (2-Men); F-, 2-10; 0, 11-12 (3-Men); F+1, 2-10; +1, 11-12 (0-Men); F+1, 2-10; +1, 11-12 (1-Man); F-2, 2-10; -2, 11-12 (2-Men) straight across. Also, on No. 12, Lineback, it should read F+4 across the three columns; for Off-Tackle it should read F-4 across three columns.

Pittsburgh End run defense, No. 10, should be changed to F-0 straight across.

\*\*\*\*\*

QUESTION: What are the running ratings for Rich Rollins of the 1965 Minnesota Twins, Willie Mays of the 1962 San Francisco Giants and Whitey Lockman of the 1954 New York Giants?

ANSWER: Rollins - 1-12; Mays - 1-17; Lockman - 1-13.

\*\*\*\*\*

QUESTION: With runners on first and third, and no outs, the batter hits into a doubleplay, scoring the runner from third. Is it an earned run? Does the batter receive credit for an RBI?

ANSWER: Yes, it would be an earned run, providing there were no errors involved in loading the bases. No, the batter would not receive credit for driving in a run.

\*\*\*\*\*

QUESTION: On a groundball "B" with a man on first the rules say the runner is thrown out at second base and the batter reaches first. Is this considered a single or a fielder's choice? If a fielder's choice, is it considered an official at-bat?

ANSWER: Such a play is a fielder's choice and, yes, it does count as an at-bat.

\*\*\*\*\*

#### MARSHALL UNIVERSITY CONTINUES AS S-O-M HOTSPOT

[Continued From page 5]

##### Spring 1977 (1976 cards)

Division I	Won-Lost	GB	Division II	Won-Lost	GB
Falls View	39-15	-	Converse	35-19	-
Charleston	35-19	4	Shady Spring	31-23	4
Yellow Spring	27-27	12	Greenwich Mets	29-25	6
Hinton	24-15	15	Thundering A's	24-30	11
Harrisville	22-32	17	Number Twelve	20-34	15
New Haven	21-33	18	Mud Fork	17-37	18

Playoffs: Falls View d. Shady Spring, 3-2  
Charleston d. Converse, 3-2

Finals: Falls View d. Charleston, 4-2

## **Rick (Wolfman) Shapiro Has A Dream**

Rick (Wolfman) Shapiro, after four straight national convention successes, is stepping down. At the conclusion of this summer's convention in Champaign-Urbana, IL, he announced that was the last he would be running.

But, don't for a moment think the Wolfman is riding off into the sunset (he prefers a full moon), leaving his Strat-O-Matic gaming and conventions behind him. "My role now becomes (one of) a convention coordinator," says Shapiro. "My goal is to see that there will be more than one convention for the summer of 1978."

"I have talked to some friends and it is possible we may have four regional conventions, with the one in the midwest as a tournament of champions."

The grandiose plan, as Shapiro and other see it, would include regional conventions at the following sites: (in parentheses are names and addresses of people who may run such regional gatherings; if interested in participating, contact them)

\* At Champaign-Urbana, IL, or Terre Haute, IN (Rick Shapiro, 9161 Kilpatrick, Skokie, IL 60076).

\* At Atlanta, GA (Stan Awtrey, Virginia Circle, Park Forest, GA).

\* At New York or New Jersey (Tom Nelson, 188-20 Nashville Blvd., Springfield Gardens, NY 11413).

\* At California (Brad Furst, Joion, CA).

"Our plan," continues Shapiro, "is to have all these conventions hold the same type of tournaments and use the same rules, and pool the money we collect to reimburse the champions of the non-midwest conventions for travel expenses to attend the Illinois-Indiana one."

"We should know more about this in December, and, hopefully, flyers will be sent in January. In any case, there will at least be one convention in Illinois-Indiana, so don't worry."

### **MORE HELP NEEDED**

Shapiro says the plan above is not the "final word," however. If there is anyone else who is interested in organizing such a convention, send him an SASE, and he'll pass along his experiences to you.

He stresses, in particular, that the best place to hold such a convention is at a college that has dorms. Also, the more people included in the organization and the running off of a tournament, the more smoothly events will transpire. Shapiro, who shouldered almost total responsibility in the beginning, found the job to be more than one man could handle satisfactorily. The last couple of conventions have witnessed many others pitching in and giving the Wolfman a helping hand.

### **BASEBALL RULES DESCRIBED**

For those thinking of holding such a tournament, but unaware of the rules of play, here is a sample from the baseball rules used at the Champaign-Urbana Convention. Note, in particular, that the teams are switched in a two-game series and that the winning team is the one with the most accumulative runs. Hence, you may lose the opener, 3-1, using Houston against Cincinnati with the '76 cards, but then pound out a 10-2 win with the Reds in the second game. Thus, you win the series by a 11-5 run margin.

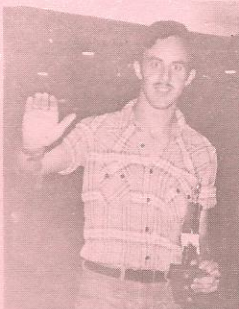
Here are the baseball rules, as used at Champaign-Urbana in 1977:

1. There will be no DH or catcher's throwing rating (unless both managers agree to use them and are using 1973-76 teams).
2. There will be no injuries.
3. No pitcher may be used more than a total of nine innings in both games.
4. You (as manager) must use a three-man rotation (pitching) for both of

(continued on next page)



your teams during the entire tournament. This rotation works by rounds. For a starting pitcher to be able to start he must have two rounds of rest. After switching teams, your opponent may start any eligible pitcher, including the one you used in the first game. This is so everything is completely equal. Also notice that this is the only exception to rule No. 3 above. If you



RUNNERUP IN THE SUPER  
ADVANCED FOOTBALL  
TOURNAMENT IN '77,  
BRAD FURST WANTS TO  
CONDUCT HIS OWN  
REGIONAL TOURNEY IN  
CALIFORNIA NEXT YEAR

have to use your second team, you will always continue your rotation for your first team the next time you use them and the same is true if you have to use your second team more than once.

5. A starting pitcher may not be removed before the 7th inning unless he is tired, given up four earned run, is behind by three or more runs (innings 1-4) or any runs (innings 5-6). If in innings (5-6), your pitcher has given up three earned runs and the game is within one run either way and your opponent is threatening to score, you may remove him.

6. A player may not play any position other than what is stated on his card.

7. All 1973-76 American League pitchers are "1" hitters. No player who has less than 150 plate appearances (hits and walks) listed on his card, may start. He can be used to pinch-hit at any time, or as a defensive replacement in the 7th inning or later.

8. An "out-3" on the fielder's chart means advancement of the lead runner only on the completion of a double play.

9. You may use any system for split numbers. We suggest a 20-sided die, or Bryan Baker's three-die split number system that has been listed frequently in the Review.

10. Catcher's holding ratings will be: 1-Catcher [-5]; 2-Catcher [-4]; 3-Catcher [-3]; 4-Catcher [-2]. Out off throws: If you go after a lead runner trying to advance an additional base, regardless if he's safe or out, all trailing runners advance an additional base. To prevent these trail runners from moving, all you have to do is allow the lead runner to advance without selecting a split card, and a out-off is assumed.

Hopefully, within the next couple of months, rules for football (are you listening, Tom Nelson and Brad Furst?) can be printed. Meanwhile, if you want to run a regional convention, the time to start organizing is now. Also, remember a good site, one with lodging at the local or in close proximity, is the No. 1 priority.

\*\*\*\*\*

## Black Versus White Baseball All-Stars

One of the most enjoyable facets of playing Strat-O-Matic games is that many interesting matchups are possible, most of which would never occur in real-life.

Teams from the present can be pitted against those of the past; all-star teams of various composition can be matched against one another; even teams with a geographical makeup have been created. Almost anything is possible.

Keith McHugh, an eight-year S-O-M player from Fresno, CA, has arranged something a little different, however, when he pitted black and white all-stars from the 1976 baseball season against each other in a best-of-seven series.

"It always has aroused my curiosity as to whether there are more black 'stars' in baseball, or more white ones," writes McHugh. "I realized that a white all-stars vs. black all-stars game could never actually be arranged in actual baseball, so I did it in S-O-M. Of course, the four-of-seven series I played was just for fun and no racial bias or prejudice was involved. I

(continued on next page)



just wanted to see how it would turn out."

The lineups used turned out to be filled with "stars," too. The black team (which included Latin Americans) was comprised of Joe Morgan, George Foster, Reggie Jackson, Hal McRae, Dave Concepcion and others. The white team had Steve Garvey, Mike Schmidt, Thurman Munson, Rick Monday, etc.

Here's how the series came out:

Game 1 - Mike Schmidt homered and Mark [The Bird] Fidrych handled the hurling in a 2-0 victory. Vida Blue was the losing pitcher.

Game 2 - Consecutive RBI singles by Morgan, Garry Maddox and Bill Madlock provided J. A. Richard with a 3-2 triumph. Frank Tanana absorbed the loss.

Game 3 - Joe Morgan singled home winning run in 10th inning in a 3-2 game. Fred Lynn had tied count at 2-2 in the ninth with a home run.

Game 4 - White team pulled out wild 10-7 victory. Greg Luzinski homered early in game, tying it 6-6, while Morgan's three-run shot had staked black squad to brief 4-3 lead.

Game 5 - Classic pitching duel between Blue and Tanana, featuring a flock of strikeouts, was decided by Garry Maddox's two-run homer. Score: 2-0.

Game 6 - Luzinski and Garvey sock home runs and Tom Seaver cruises along with little trouble in 7-1 victory. Series is all even, 3-3.

Game 7 - Morgan and Madlock each deliver three hits and Blue tames opposition on only five hits (walking none) in 4-1 finale. Although series was marked by solid slugging, it was Blue's last two pitching performances that decided outcome.

McHugh adds a footnote that, "No, I'm not going to say that black players are better than white players after playing this series. But I will say it was fun to find, and play, all the great players and you have to admit that it was an unusual S-O-M replay."

\*\*\*\*\*

## Replay Takes Four Years To Complete

Another S-O-M Baseball replay that doesn't belong in the realm of the ordinary is Mark Edgar's replay of the 1971 season--a task that encompassed playing nearly 2,000 games, covered four years, and included places such as Midway Island, Guam, Japan, Hong Kong, the Philippines and the decks of the U.S.S. Dixie as playing sites.

Edgar, in case you hadn't guessed, replayed the baseball season while in the navy and while seeing the world. Wherever Edgar went, S-O-M Baseball followed.

Actually the replay was started in July of 1973. It was to be a solitaire effort using the elementary side of the cards, but with advanced hit-and-run, bunting and throwing ratings. In November of that year, Edgar joined the Navy (in a sense, so did S-O-M).

Whenever anchors were lifted, Edgar packed up his S-O-M game and off the two went. When anchors were dropped, he unpacked the game and resumed dice-rolling. Four years...that's how long the replay (both American and National Leagues) took to complete.

"Hopefully, this replay will incite those who have not conducted their own replay to do so. This shows that by completing a replay one need not spend their free time exclusively on Strat-O-Matic. Just continue a steady interest," says Edgar. "You'll still have plenty of time for other things; like a four-year hitch in the service."

### FIRST NO-HITTER...ON MIDWAY ISLAND

Edgar's first no-hitter in 10 years of S-O-M occurred during this replay. Joe Coleman of Detroit set down California without a hit in a game played on Oct. 19, 1974, while on Midway Island. Later, on June 1, 1976, aboard the Dixie, Edgar got his second no-hitter as Gary Nolan of Cincinnati duplicated

(continued on next page)



Coleman's earlier feat against St. Louis.

#### A LOOK AT THE PENNANT RACES

The New York Mets, with pitching the basis for success, won the National League East, edging out real-life champ Pittsburgh by two games. The world champion Bucs won 18 of their first 20 games but were riddled by injuries (Willie Stargell missed 32 games) and fell short. San Francisco, meanwhile, captured the West by a comfortable nine-game margin over Los Angeles.

In the A.L., Baltimore won the East and Oakland, after watching Chicago lead most of the season, ultimately took the West, thanks to its depth and success in the final weeks of the campaign.

The World Series was won by Baltimore, in six games, with the Mets beset by injuries in the post-season skirmish. Surprisingly, one of the reasons the Mets won the N.L. East was because the team was relatively free of injuries.

Edgar does point out that 502 injuries were suffered and that they made their mark on the final standings.

Final standings and leaders (1971 season):

#### NATIONAL LEAGUE

West	Won-Lost	GB	East	Won-Lost	GB
San Francisco	95-67	-	New York	95-67	-
Los Angeles	86-76	9	Pittsburgh	93-69	2
Houston	83-79	12	St. Louis	86-76	9
Cincinnati	78-84	17	Chicago	80-82	15
Atlanta	78-84	17	Montreal	68-94	27
San Diego	75-87	20	Philadelphia	55-107	40

Batting		Home Runs		RBI	
Torre (SL)	.371	E.Williams (ATL)	48	Aaron (ATL)	134
Beckert (CHI)	.358	Aaron (ATL)	45	Bonds (SF)	118
Garr (ATL)	.357	Bonds (SF)	41	Torre (SL)	115
M.Alou (SL)	.332	L.May (CIN)	39	Allen (LA)	112
Sanguillen (PIT)	.326	Robertson (PIT)	39	Stargell (PIT)	111
Rose (CIN)	.325				
Aaron (ATL)	.324	Hits		Runs: Brock (SL)	115
Staub (MONT)	.324	Garr (ATL)	245	2B: M.Alou (SL)	43
W.Davis (LA)	.319	Torre (SL)	216	3B: Davalillo (PIT)	15
Bonds (SF)	.314	M.Alou (SL)	216	SB: Brock (SL)	51

Wins		ERA		Strikeouts	
Jenkins (CHI)	24	D.Roberts (SD)	1.47	Seaver (NY)	316
Roberts (SD)	23	Seaver (NY)	1.50	Jenkins (CHI)	276
Seaver (NY)	22	Nolan (CIN)	1.94	Stoneman (MONT)	253
Gibson (SL)	21	D.Wilson (HOU)	2.12		
Marichal (SF)	21	Dierker (HOU)	2.23	Saves	
				Giusti (PIT)	28, Brewer (LA)
				26, Marshall (MONT)	19, J.
				Johnson (SF)	19

#### AMERICAN LEAGUE

West	Won-Lost	GB	East	Won-Lost	GB
Oakland	97-65	-	Baltimore	101-61	-
Chicago	89-73	8	Detroit	95-67	6
Kansas City	84-78	13	New York	85-77	16
California	82-80	15	Boston	75-87	26
Milwaukee	79-83	18	Washington	59-103	42
Minnesota	77-85	20	Cleveland	49-113	52

Batting		Home Runs		RBI	
Olive (MIN)	.338	R. Jackson (OAK)	48	Jackson (OAK)	114
Rettenmund (BAL)	.323	Melton (CHI)	38	Murcer (NY)	107
Murcer (NY)	.311	R. Smith (BOS)	36	Melton (CHI)	103
Kaline (DET)	.307	N. Cash (DET)	30	R. Smith (BOS)	103
F. Alou (NY)	.306	G. Nettles (CLE)	30		

(continued on page 13 )



## S-O-M Baseball Trivia Corner

And away we go once again with a set of Strat-O-Matic Baseball trivia question answers. Robert Henry never sleeps, as we all know, and has readied another set of answers to go with a new, testing batch of questions.

Enough chit-chat, let's dig into those answers of last month's questions.

**QUESTION:** A question not long ago focused on several pitchers who have received triple splits, but did not mention any hitters. Who is the only hitter to receive a triple split? Hint: This player holds what is probably the best known single-season record for real-life performance and for S-O-M performance--and his card has been reproduced in the Review.

**ANSWER:** 1961 Roger Maris, holder of the real-life record for most home runs in a season (61) and the S-O-M record for most home run [chances] on a card (16.6), received a triple split on 2-6: Double (1-5), Single (6-17), popout (18-20).

\*\*\*\*\*

**QUESTION:** Given the recent strikeout performances of several pitchers, it seems hard to believe that Sandy Koufax established a strikeout record with 269 in 1961. [This record, of course, was soon broken by several others, including Koufax] How many strikeouts did Koufax receive on his S-O-M card [card chances]? Question was submitted by Rick York.

**ANSWER:** Koufax, who set the National League at that time, also set the S-O-M record with 40 strikeout chances on his card. Like the real-life record, however, the S-O-M record was soon broken.

\*\*\*\*\*

**QUESTION:** Has any modern batting champion been rated running 1-8?

**ANSWER:** Although most modern batting champions have been good baserunners, 1970 Rico Carty (.366) and 1971 Joe Torre (.363) were slow-motion personified on the basepaths, both being rated 1-8.

\*\*\*\*\*

**QUESTION:** A relief pitcher with an earned run average less than 2.00 is quite an asset to a team. A lefty-righty relieving combination is also quite valuable. And, so are the high strikeout relievers. Which team [modern] had a lefty-righty relief combination, with each pitcher's ERA less than 2.00 and each pitcher with more than 40 card strikeout chances?

**ANSWER:** Only the 1971 New York Mets with righty Dan Frisella (1.98 ERA, 41 strikeout chances on card) and lefty Tug McGraw (1.70 ERA, 41 strikeouts) can make this claim. And, if the strikeouts of this tandem doesn't intimidate opponents, keep in mind that on rare occasions they will relieve Tom Seaver (1.76 ERA, 42 strikeouts on card).

\*\*\*\*\*

**QUESTION:** Who holds the record for fewest hits on a modern starting pitcher's card [one who worked regularly, at least 162 innings]?

**ANSWER:** 1968 Luis Tiant, 4.7 hits (1.5 home runs, .4 triples, 2.5 doubles and .3 singles) is tops, followed by 1973 Jim Bibby (4.8) and 1974 Nolan Ryan (4.95). If he had worked more, 1970 Tom Hall (155 innings) with only 3.95 hit chances (1.35 HRs, .4 3Bs, 1.8 2Bs and .4 1Bs) would hold the record.

\*\*\*\*\*

[continued on next page]



**QUESTION:** Who holds the record for most home runs on the advanced side of a card (either versus left-hander or right-hander)? Question submitted by Jon Mack.

**ANSWER:** 1971 Hank Aaron (versus left-handers) also has this record. His 21.75 home run card chances edge 1973 Bill Sudakis' 21.2 home runs. Sudakis, another right-handed batter, also did his home run socking against southpaws.

\*\*\*\*\*

## Next Month's Trivia Quiz

Here's the list of questions for next month's answering. Most of them are Henry's creations, but a few were submitted by other gamers (who also provided answers, thankfully).

**QUESTION:** After 1961 Roger Maris (who has seven such spaces: 1-9, 1-10, 1-11, 1-12, 2-2, 2-3, 2-4 and one partial space; 2-5) which modern players has the most home runs? Disregard the number on which the home run occurs; count any space, whether a 2, 12, or 7, or anything in between as one space. (Question submitted by Keith McHugh; to be answered by Henry)

**QUESTION:** The 1961 Yankees and 1965 Milwaukee Braves share the record for most (six) 20 home run players. Who were those 20 home run players, how many did each hit and how many home run chances did each receive on his card? (Submitted by Randall Witt; to be answered by Henry)

**QUESTION:** Who holds the record for most Groundball A results on a modern running 1-17 player's card? (Submitted by Ken Schmidt; Henry will answer)

**QUESTION:** Which modern hitters have received two consecutive 13 home run card chances?

**QUESTION:** Has any modern player been rated stealing E and running 1-17 on the same card?

**QUESTION:** What was the last S-O-M Baseball team to have two players named Horace on the roster? (Question submitted and will be answered by John Borack)

**QUESTION:** Name the only two players from the 1975 season who faced either righty or lefty pitching zero per cent? (Submitted and will be answered by an unknown gamer)

### STRAT-O-FACT!

Dale Barnes of River Forest, IL, found one of those S-O-M Baseball card oddities that keep avid card collectors awake nights trying to discover. This one involves Manny Sanguillen, 1969, who has a double followed by only one asterisk!

\*\*\*\*\*

### *Joins The Navy, Sees The World...But Continues Playing S-O-M*

(continued from page 11 )

Batting Con't		Hits		Runs: White (NY) 98	
Tovar (MIN)	.304	Tovar (MIN)	212	28: Northrup (DET)	39
Carew (MIN)	.302	Carew (MIN)	188	38: Clarke (NY)	11
F.Robinson (BAL)	.302	R.Smith (BOS)	175	F.Alou (NY)	
R.White (NY)	.301	Oliva (MIN)	174	98: Otis (KC)	60
Chambliss (CLE)	.301				
Wins		ERA		Strikeouts	
Lolich (DET)	28	Wood (CHI)	1.40	Blue (OAK)	316
Wood (CHI)	25	R.May (CAL)	1.58	Lolich (DET)	310
Palmer (BAL)	24	Blue (OAK)	1.96	Coleman (DET)	235
Blue (OAK)	22	Lonborg (BOS)	2.24	<u>Saves:</u> Sanders (MIL) 30,	
P. Dobson (BAL)	22	Lolich (DET)	2.28	Hennigan (CLE) 24, Scherman	
				(DET) 22, Fingers (OAK) 22	



## Advertisements

14

Rates per issue will be as follows: First 30 words--50¢; 31-50 words--70¢; 51-70 words--\$1.00; 71-100 words--\$1.50; 101-120 words--\$1.80; 121-150 words--\$2.00; 151-175 words--\$2.50; 176-200 words--\$3.00. When you send in ads, specify either WANTED, FOR SALE, or LEAGUE FORMING. And name card sets by the year upon which they were based. Note also that only advertisements regarding Strat-O-Matic products, related merchandise (such as Baseball Registers, various sports guides, etc.) and leagues will be accepted. Merchandise competing with S-O-M products, such as scoresheets, etc., may not be offered for sale. Ads, to be included in the next issue of the Review, must be in by the third of the month. Money for ads will not be refunded, but will be credited to your subscription if you do not wish ad to appear. Be sure and give all sections of the country ample time to respond to ads--mail is notoriously slow in some areas.

### Wanted

WANTED: 1967, 1968, 1969, 1972 Detroit Tigers; 1968 St. Louis Cardinals; 1969 New York Mets. Teams must be complete and in good condition. Will pay any reasonable price. Write to: David Brewer, 1291 East Outer Dr., Monroe, MI 48161

WANTED: I would like to buy any Strat-O-Matic Baseball teams or sets for any year prior to the 1975 season. Please send the team or set name, year, condition and the price you are asking. I will answer all replies. Send to: A.M. Edwards III, Box 7917, University, MS 38677

WANTED: 1974 baseball, individual teams or complete set. Complete sets only for years before 1973. State: teams, years, complete price list. Write: Robert Marino, 6 Farley Drive, Rensselaer, NY 12144

WANTED: S-O-M Baseball cards, complete sets only, any of the following years: 1963 through 1972 inclusive. I do not want to enter a bidding war! State me a flat, reasonable price, and you've got it. Jim Beauchemin, RD#2, c/o Edward Dayo, Plattsburgh, NY 12901 (518-563-8175)

WANTED: Badly, 1967 N.Y. Jets and 1973 Buffalo Bills. Am willing to pay top dollar. Write to: Kenneth Cummings, 423 11 St. 50, Moorhead, MN 56560

WANTED: Any good condition 1967 and 1968 football cards. Also 1969 Cubs and Orioles. IF interested, write to: Jeff Harris, 765 Geneva, Romeoville, IL 60441

WANTED: 1968, 1972 Tigers. Please state bid and if extras are included or not. Send all offers to: Carey Allen, 12828 Lenore, Redford, MI 48239

WANTED: 1969 National League S-O-M cards. Will consider entire 1969 set. Please send your asking price and condition of cards to: Steve Healy, 1133 Lyman, Oak Park, IL 60304

WANTED: Baseball cards based on 1965, 1966, 1967 and 1968 season play. Call or writer: G.A. Phillips, 1419 Capital Avenue, N.E., Apt. 36, Battle Creek, MI (616-965-3485).

WANTED: 1970-72 Cubs, 1969-72 Orioles, 1975 Red Sox. Please state condition and if you have extras. Send SASE. Lowest offers accepted. Barry Miller, 8 Sandalwood Lane, Andover, MA 01810

WANTED: 1971 Giants, 1971 Reds. Will buy from the lowest bidder. Send offers to: Tom Grzywacz, 60 Valley View Road, Trumbull, CT 06611

WANTED: Have entire AFL-1967 season [9 teams] in good condition. Will trade for best offer of the following: Cash, S-O-M Basketball game, 1969-1975 baseball teams, 1972-1976 basketball teams. Note: AFL teams like new, but a few slightly marked. Send SASE for reply. Contact: Peter Gillis, 4427 Greenwich Parkway, N.W., Washington, DC 20007

WANTED: 1970, '71, '72, '73 season Oakland A's baseball teams. Will pay lowest bid. Cards must be in good to excellent condition. I am buying these teams separately. You do not need to have all four teams to bid. Write to: Niel Johnson, 133 Wanda Ct., Santa Cruz, CA 95065

(Continued on next page)



## For Sale

FOR SALE: Many S-O-M Baseball and football teams for sale. Baseball - 1967-73; Football - 1967-71. Also have some incomplete baseball teams available. Send SASE for price list. Mike Barnd, 313 E. Freeman Apt. #5, Carbondale, IL 62901

FOR SALE: 1969 baseball cards. Best offer or trade for 1972-73 football cards. Bill Gambli, 111 Waiverly Place, Apt. 3, New York, NY 10011

FOR SALE: 1963 Cubs, Reds, Houston; 1965 Phils, Reds, Houston, Cubs, Mets (one player missing); 1968 San Francisco. All teams in good condition. Keith Fosness, 510 17th St. So. Apt. #4, Moorhead, MN 56560

FOR SALE: S-O-M Football teams, 1967, 1968, 1969, 1970. Condition good to excellent. I have a price in mind for each team and will sell either to the first person who meets my price or to the highest bidder by the end of the month. Mike Bordelon, 5445 Braesvalley, #724, Houston, TX 77096 (phone: 713-721-5465)

FOR SALE: Baseball - (1) 1973 Atlanta, Cincinnati, Pittsburgh, St. Louis, Montreal, Los Angeles. Price: \$7.50. (2) 1974 Baltimore, New York Yankees, Kansas City, Cleveland, Texas, Chicago, California, Milwaukee. Price: \$7.50. Football - 1972 Miami, Dallas, Pittsburgh, Cincinnati, St. Louis, Buffalo, Kansas City, Minnesota. Price: \$10.00. All teams are in very good to excellent condition. All prices include postage costs. Send SASE. Ezra Ochshorn, 12501 28th St., Tampa, FL 33612

FOR SALE: 1975 and 1976 baseball seasons with extra players. 26 different Old Timer teams plus Hall of Famers. All cards in mint condition. Sell everything including game parts for \$25.00. Also 1972-73, 1974-75, 1975-76 basketball seasons. All mint with game parts for \$14.00. First check will take them. I will pay postage and will return losing checks immediately. Bob Ehrhard, 26 Route SW, Piermont, NY 10968

FOR SALE: 1965 A.L. and N.L.<sup>15</sup> baseball set (good-excellent). Authentic, will sell to highest bidder, or possibility of trade for other years. Write: Dave Bellefeuille, 9245 Airlie Street, Apt. 20 LaSalle, Quebec, Canada (phone: 1-514-364-1542).

FOR SALE: Super close-out special! Entire Football series, all teams in good to excellent condition. Buy all teams from 1967 to 1975 as a set, 261 teams in all. The price for this great offer is \$261 complete. I might sell them as individual sets, but prefer to sell as a unit. Will include extra bonus for complete set sale, 20 extra teams from 1973, '74, '75--free with order. Do not send any money for anything until offer is accepted. I will not return unsolicited money. Teams will be insured when they are shipped; mailing charges are the buyers. If interested writer, or call 215-647-4621 on Saturday or Sunday; John A. Scalise, 112 Richmond Road, Paoli, PA 19301. This is it, a chance to own a complete set, all in one, of every Strat-O-Matic Football team ever made from 1967 to 1975. It may be your last chance for such an offer. So act now.

FOR SALE: 1967 Chargers, 49ers, Oilers, Cowboys, Chiefs, Lions, Steelers, Redskins, \$9 each team. 1968, most football teams available, \$8 each team. 1969 all football teams, \$7 each team; 1970 all football teams, \$6 each team; 1971 all football teams, \$6 each team. Teams are in good condition, many 1970-71 teams are in mint condition. Baseball teams - 1965 Tigers, White Sox, Indians, \$10 per team. 1968 Cubs, Indians; 1969 Royals, Giants, Pirates, Braves, Dodgers, Orioles, Astros, Twins, Cardinals, Reds, Senators, Phillies, \$8 per team. 1970 all baseball teams, \$6 per team; 1971 all baseball teams, \$6 per team; 1971 48 additional N.L. players, \$6 set; 1971 48 additional A.L. players, \$6 set. Teams are in good condition, the 1971 set is in mint condition. Prices listed are those desired. However, higher bids will be accepted. Items will be sold to the highest bidder. S-O-M Review, April 1971 to Aug., 1972 and Feb., March, April 1974, \$1 per issue or top bid. Old Timer baseball teams, 35¢ per team. You pay postage on all orders. Send bids to: John McNabb, Jr., 1200 Glenwood Ave., Peoria, IL 61606

(Continued on next page)



FOR SALE: Baseball - 1970 Giants; 1972 Giants, Royals, Braves; 1973 Pirates, Royals, Tigers, Giants, White Sox, Cardinals, Yankees; 1974 Cardinals, Phillies, Giants; 1975 Orioles, Royals. Assorted players from 1972 to 1975, 170 players. Football - 1973 Chiefs, Dolphins, Eagles, Steelers, Cowboys, Rams, Redskins. Basketball - 1973-74 complete set, except for Boston, Milwaukee, Chicago, Portland and Washington. All 12 teams with game \$12.00. Bid for separate teams. S-O-M Reviews: 1973 Nov., 1974 Jan., May, June, Sept., Oct., 1975 March, April, May, 1977 May, June. Highest bids win. Send bids and SASE to: Robert Gross, 8 Concord Drive, Englishtown, NJ 07726

FOR SALE: Baseball - 1971, '72 complete set (very good condition); 1969 Detroit, Houston, Seattle, San Diego (mint condition), '69 Philadelphia (good condition); '70 Minnesota, California (mint). Strat-O-Matic Review - all 1973 plus 6 issues in '72. Send best bid over \$50.00 to: Richard Gant, 206 Hickory St., Brooksville, FL 33512

## League Forming

LEAGUE FORMING: CSOMBA, now entering its fourth year of operation, needs three or four replacement managers. This is a PBM draft baseball league that uses both National and American League cards and operates year-round. If interested, contact: Dave McCusker, 308 Niderost St., Saskatoon, Sask., Canada S7J 0M1

LEAGUE FORMING: Want your own team instead of inheriting one in an established league? I'm forming a PBM baseball league which will use the new cards (based on 1977 season) when S-O-M sends them out. 12 or 24 teams (depending on number of replies), draft league setup. League will be a continuous system--the players you draft now are yours in all future seasons. 162-game schedule to be played at a pace any S-O-M freak can surely handle. Frequent newsletters will be printed. Experience helpful but not required. I'll have schedules prepared early, so that two weeks

16  
after '77 cards are mailed we can hold the draft and get moving. Why wait for a league that isn't ready until summer when you can start by March? Send your resume (name, address, age, experience if any) to: Steve Beck, 1363 73rd Street, Brooklyn, NY 11228. All letters will be answered.

LEAGUE FORMING: Need managers for PBM draft league using the 1976 cards with extras. Write whether you want to play basic or advanced to: Bill Bradley, 121 Shady Lane, Lansdale, PA 19446

LEAGUE FORMING: The North Atlantic Baseball Association is looking for four capable and reliable managers. This is a draft league using teams from both the National and American Leagues. We will play 160 games. The 1977 [1976 stats] cards will be used; we also will be using the advanced version. Act quickly so you can insure yourself a spot in this league. There is an entry fee of \$4.00. Write: Scott Ellis, Rt. #3 Box 139, Seaford, DE 19973 [or call: 302-629-4279]

LEAGUE FORMING: Managers wanted for PBM league with 1950 and 1960 Old Timer teams. Managers may play one or two teams. Total number of teams depends on how many managers wish to play two teams. Possibility of 16 teams. This will be a well-run league with complete stats kept by league office and scoresheets exchanged after each series. Will play a 162-game schedule. Entry fee of \$10.00, with \$5 refunded if season completed. Reliable and mature people only. Send choice of teams from 1 to 10 and if you wish 1 or 2 teams. Second team will be picked reverse of first. Person who got first choice on first team gets last on second. Send qualifications and age. Reply to: Paul Schieck, 304 Lewis Lane #76, Casper, WY 82601

LEAGUE FORMING: Interested in forming face-to-face league in Chicago and suburbs. Have 8 members now; looking to expand in second football season. Also interested in finding people who wish to form basketball league. Call Jeff Harris [815-886-0424].

LEAGUE FORMING: The United States Baseball Association is looking for dependable managers for four openings in our PBM baseball league. Write to: Roy Dixon, 8040 Van Patten Rd., Norfolk, VA 23505

[Continued on next page]



**LEAGUE FORMING:** The North American Baseball League will be entering its third season next spring and is looking to expand. The NABL is a draft league that will be playing the advanced game with a few alterations to increase realism and excitement. This is a PBM league and we want only reliable managers to respond. League fee will range from \$3 to \$5. If interested, write to: Rick Helwig, 400 3rd St., Hanover, Ont. N4N 1B3

**LEAGUE FORMING:** I need 23 managers for a full-scale PBM replay league using the 1977 baseball cards. All teams with extras (except Seattle and Toronto) will be used. If you are interested and are sure you can play a 160-game season, send a list of 24 teams in your order of preference to: Chris Gage, RFD#2, Plainwell, VT 05667. Entry fee is \$2.50.

**LEAGUE FORMING:** Ever wonder whether your Mike Schmidt really went 0-for-13? If that fella really hit 62 homers? If your team would have done better in a face-to-face league? Can you accept the concept of not playing your own team, but rather mailing your instruction sheet, as will your opponent, to a neutral member who plays the series? I am looking for several new members for a league already in progress who can. You must be accurate, on time, complete, know whether a run is earned or not, know whether a plate appearance is an at-bat or not, and added correctly, or I will dismiss your or mail it back to you to be redone. We draft minor leaguers but they cannot play for you until they get an S-O-M card. If you like this setup and think that you give me what I want, then write to: Thomas Angel, 1312 N.E. 34th Ave., Ocala, FL 32670

**LEAGUE FORMING:** 1975 cards, advanced version, American League replay (PBM), with trading; no entry fee, but please do not apply unless you are totally psyched, willing to play games on time, and able to finish the season. Well-organized league,

veteran commissioner. Jim Beauchemin, RD#2, c/o Edward Deyo, Plattsburgh, NY 12901

**LEAGUE FORMING:** Three reliable managers needed. The 1978 edition of the American League baseball cards will be used. Tentative starting date April 15, 1978. Contact: Anthony Paldino Jr., Box 1004 Tower A, Hempstead, NY 11550 (516-560-4611) or Joseph Paldino, 1515 W. 5th St., Brooklyn, NY 11204 (212-331-3260).

**LEAGUE FORMING:** Anyone living in the Redford-Detroit-Livonia-Farmington or Plymouth, Michigan area. I am looking for 10 reliable managers for 1976-1977 season, 162 games, starting as soon as possible. A small fee will be asked. For the American League season. This will be a face-to-face league. Please call (313-537-5396) or write to: Carey Allen, 12828 Lenore, Redford, MI 48239

\*\*\*\*\*

## Back Issues Of Review

The following back issues of the Strat-O-Matic Review are still available. To purchase, send to: Strat-O-Matic Review, P.O. Box 27, Otsego, MI 49078. Include a second choice when ordering issues that are in "limited" supply.

### 1977

Oct., Sept., August, July, June (limited), April, Feb. Cost: 50¢ each.

### 1976

Dec., Nov., Oct., July (limited), June. Cost: 50¢ each. Jan. also available. Cost: 45¢.

### 1975

Nov. (limited), Oct., Sept., August, July, June, May, Feb. and Jan. Cost: 45¢ each.

### 1974

Dec. and Nov. Only two months still available. Cost: 45¢ each.

### 1973

Dec. and August. Both in limited supply. Cost: 40¢.

### 1972

Only August still available (limited). Cost: 40¢.

\*\*\*\*\*

REMINDER: WHEN CHANGING ADDRESS PLEASE INFORM THE REVIEW WELL IN ADVANCE. THIRD-CLASS MAIL IS NOT FORWARDED. PLEASE! AT LEAST SIX WEEKS NOTICE.



## NBA Foul Ratings For 1976-77

Remember Larry LaRochelle's foul ratings for basketball, printed in the January, 1977 issue of the Review? In case you don't, they emphasized that some players commit less fouls than do others--and that as a result they should be "protected" more in S-O-M games.

In other words, players such as Kareem Abdul-Jabbar, Rick Barry, the "Mr. Cleans" of pro basketball, shouldn't draw as many fouls as the so-called hatchetmen of the league.

LaRochelle's method of cutting down foul calls on the Jabbars, Barrys, etc., was to give each player a rating, from 1 to 10, based on how frequently they commit fouls. A "1" rating is the lowest frequency to commit fouls while a "10" would represent the highest--or a player who practically picks an opponent's pocket to gain possession of the ball, after clubbing him into submission first.

LaRochelle, who hails from Orono, ME, directed his first foul frequency ratings at the 1975-76 seasons. Now, he's back with ratings based on last season.

Before plunging ahead, however, a refresher course might be in order as to how to utilize the ratings. New subscribers, especially, will need it. Here are the guidelines:

1. Use the individual foul ratings ONLY on rolls off the Team Defensive card.  
2. On those rolls on the Team Defensive card, FOUL RATINGS are to be used whenever a foul (1) or foul (2) roll is made, and also whenever a defensive rating of a defender is needed for the outcome of a shot.

A. For those times when a foul (1) or foul (2) occurs, multiply the foul rating of the defensive player and pick a split card. If the split number is equal to or less than the new number (Foul rating X 2), then consult the defensive player's defensive rating for the outcome of the shot. No foul would be committed under this circumstance.

B. For those times when the defensive rating of a player is needed (remember! only to be used on the Team Defense card), consult the defensive player's foul rating and pick a split card. If the split number is equal to or less than the foul rating, a foul is committed. Consider an outside shot or penetration shot to be a foul (1) and an inside shot to be a foul (2). If the number is greater than the foul rating, follow the normal procedure of consulting the defensive player's rating for the outcome of the shot.

3. Do not use the foul rating when the defensive center is needed to help out defensively on a shot. This would concern rolls on the defensive card of 8 (penetration shot) and 4 (inside shot).

### HOW THE PLAYERS WERE RATED

LaRochelle also explained how the ratings were derived at (by figuring the average number of fouls committed by each player for every 48 minutes of play), pointing out that most of the 9 and 10 rated players were backup centers and forwards who subbed physical play oftentimes for ability.

Here is the scale:

Fouls Per 48 Minutes	Foul Rating	Per 48 Minutes	Foul Rating
More than 6.50	10	4.50 to 4.75	5
6.00 to 6.50	9	4.00 to 4.50	4
5.50 to 6.00	8	3.75 to 4.00	3
5.25 to 5.50	7	3.25 to 3.75	2
4.75 to 5.25	6	Less than 3.25	1

On the next page is found a complete team-by-team listing of foul ratings based on the 1976-77 real-life NBA season:

(continued on next page)



<u>Atlanta</u>		<u>Boston</u>		<u>Buffalo</u>		<u>Cleveland</u>	
T. Barker	10	J. Ard	9	D. Adams	8	J. Brewer	3
J. Brown	10	T. Boswell	10	B. Averitt	7	G. Brokaw	7
K. Charles	5	D. Cowens	9	A. Dantley	2	A. Carr	4
J. Drew	5	J. Havlicek	2	E. DiGregorio	1	J. Chones	6
S. Hawes	10	C. Rowe	5	G. Gerard	10	J. Clemons	1
A. Hill	9	F. Saunders	10	J. Gianelli	4	C. Russell	4
L. Hudson	4	C. Scott	5	G. Johnson	10	B. Smith	5
J. Meriweather	10	K. Stacom	1	J. Shumate	2	E. Smith	10
T. Robinson	4	J. White	1	R. Smith	4	D. Snyder	6
C. Terry	4	S. Wicks	9	C. Williams	2	F. Walker	6
<u>Houston</u>		<u>New Orleans</u>		<u>N.Y. Knicks</u>		<u>N.Y. Nets</u>	
J. Johnson	8	R. Behagen	10	B. Beard	9	M. Bantom	8
D. Jones	10	F. Boyd	1	B. Bradley	8	T. Bassett	6
K. Kunnert	10	E. Coleman	8	W. Frazier	2	M. Davis	8
J. Lucas	2	P. Griffin	10	P. Jackson	10	J. Fox	10
M. Malone	7	A. James	8	M. Layton	7	B. Hawkins	7
C. Murphy	5	R. Kelley	10	B. McAdoo	4	K. Hughes	10
M. Newlin	6	P. Maravich	1	T. McMillen	6	A. Skinner	8
T. Owens	10	J. McElroy	1	J. McMillian	1	C. Terry	7
E. Ratleff	4	O. Moore	7	E. Monroe	2	J. V'Breda'ff	4
R. Tomjanovich	1	N. Williams	7	L. Shelton	10	D. Wohl	8
<u>Philadelphia</u>		<u>San Antonio</u>		<u>Washington</u>		<u>Chicago</u>	
H. Bibby	2	A. Bristow	5	D. Bing	6	T. Boerwinkle	10
J. Bryant	10	L. Dampier	1	P. Chenier	1	A. Gilmore	4
H. Catchings	10	C. Dietrick	10	L. Gray	10	W. Holland	3
D. Collins	4	M. Gale	4	K. Grevey	7	M. Johnson	7
M. Dunleavy	10	G. Gervin	6	E. Hayes	4	J. Laskowski	1
J. Erving	4	G. Karl	10	T. Henderson	1	J. Marin	5
L. Free	4	L. Kenon	1	M. Kupchak	9	S. May	3
C. Jones	10	M. Olberding	10	M. Riordan	7	J. Mengelt	4
G. McGinnis	6	B. Paultz	5	W. Unseld	4	C. Pondexter	3
S. Mix	4	J. Silas	6	L. Wright	8	N. VanLier	4
<u>Denver</u>		<u>Detroit</u>		<u>Golden State</u>		<u>Indiana</u>	
M. Calvin	4	M. Barnes	10	R. Barry	1	M. Bennett	10
D. Issel	5	M. Carr	6	D. Dickey	8	D. Buse	1
B. Jones	5	L. Douglas	10	C. Dudley	6	M. Flynn	3
T. McClain	9	A. Eberhard	10	C. Johnson	7	S. Green	10
J. Price	9	C. Ford	2	R. Parish	10	D. Hillman	10
P. Silas	4	B. Lanier	2	S. Parker	4	W. Jones	7
D. Thompson	3	E. Money	9	C. Ray	8	B. Knight	1
F. Taylor	9	H. Porter	4	P. Smith	3	D. Robisch	4
M. Webster	8	K. Porter	9	J. Wilkes	4	D. Roundfield	10
W. Wise	9	R. Simpson	1	C. Williams	7	J. Williamson	6
<u>Kansas City</u>		<u>Los Angeles</u>		<u>Milwaukee</u>		<u>Phoenix</u>	
M. Barr	3	K. Jabbar	4	J. Bridgeman	4	A. Adams	7
R. Boone	4	T. Abernathy	4	Q. Buckner	10	D. Awtrey	5
J. Eakins	10	L. Allen	2	F. Carter	7	K. Erickson	9
D. Johnson	8	D. Chaney	4	B. Dandridge	4	B. Fehrer	5
S. Lacey	7	D. Ford	5	S. Lloyd	10	R. Lee	10
A. McCarter	4	C. Kupec	8	D. Meyers	8	R. Sobers	9
B. Robinzine	10	B. Lamar	1	S. Nater	7	I. Terrell	5
B. Taylor	3	C. Russell	1	K. Restani	4	D. VanArsdale	1
R. Washington	10	E. Tatum	9	L. Walton	2	T. VanArsdale	7
S. Wedman	3	K. Washington	10	B. Winters	4	P. Westphal	1
<u>Portland</u>		<u>Seattle</u>		<u>Seattle</u>		<u>Seattle</u>	
J. Davis	4	M. Lucas	6	F. Brown	1	W. Norwood	8
H. Gilliam	6	L. Neal	10	T. Burleson	10	B. Seals	9
B. Gross	7	L. Steele	9	M. Green	6	S. Watts	5
L. Hollins	8	D. Twardzik	8	D. Johnson	9	N. Weather's'n	6
R. Jones	8	B. Walton	2	B. Love	6	B. Wilkerson	4



## Readers Roll 'Em

20

### BETTER INJURY IDEA

I am hoping that one of the many gamers across the map can possibly design a better injury chart for S-O-M Baseball.

It seems weird that American League pitchers have no way of being injured. After all, with line shots off kneecaps, sore arms and severe cases of tendonitis striking down pitchers in both leagues in real-life, why should A.L. hurlers be immune from suffering injuries on the S-O-M chart?

I tried to make a better chart but I didn't do such a hot job. I was wondering if someone could finish the project and share it with me and others?

Keith Adams  
912 Halsted Rd.  
Rockford, IL

Editor's note: Injury charts devised by gamers are frequently printed in the Review--a reprint of an old one is coming up in either the December or January Review. The Review, of course, is always open to new suggestions, or better ideas.

Regarding injuries to pitchers in the A.L., they can occur. All of S-O-M's roster sheet note that a pitcher becomes injured when a 6-12 is rolled when the designated hitter is at bat.

### TIME FOR ACCOLADES

Thanks for a good job on the Review.

To respond to Chris Jones' criticism of the "Trivia" section: I don't enjoy it either but would rather choose to ignore it myself than exclude it since obviously others seem to like it.

Particularly though, I am writing to push for a Hall of Fame type (or All-Time great, whatever you may want to call it) teams for pro football. That's the thing that keeps me playing another brand game--just for the Old Timers.

L.V. Peverilli  
Box 66  
Miles, IA

Editor's note: Hopefully, the latest (and first) eight Old Timer pro football teams somewhat satisfied your craving for teams out of the past. Response to the set was so good that it's almost certain that more such sets are soon to follow.

Hall of Fame-type teams, however, are still not, at this point in time, off the drawingboard.

### THE CARD 'CRUSH'

As an avid Strat-O-Holic, I'm wondering about the game company's future plans. I guess that all readers know of the testing of the hockey game, which I expect will be marketed next fall. But what after that?

There are numerous sports to be considered (i.e. soccer, boxing, golf, and tennis), but their appeal would seem to be somewhat limited. Of course, with soccer drawing record crowds, it may be created into a new game, but it still seems to me that S-O-M must have some other ideas cooking after the hockey game.

One thing I would like to bring out is no fault of the game company's, yet it is something we all have to deal with. If you look at when new cards are released, you will note that the baseball game starts the year in late January. But there is a five-month gap until the next cards, football, come out. Very soon after that comes the basketball, and finally, the college football in December.

The problem being that there are so many cards coming out so quickly, it's hard to keep up with the new printings. Obviously, S-O-M can't alter the sport seasons, but I wonder if other gamers are deluged with cards this time of year?

Last thing is that I feel that the Review should put out four special issues to coincide with the new cards and devote these publications only to that sport. You could have spring (baseball, mid-February), summer (football, mid-July), fall (basketball, mid-October) and winter (college football, mid-December) specials. This way there would be four more issues for all Review fans, and there would be a Review devoted to the S-O-M sport(s) you play, filled with tips and such. What do the readers think?

Todd Giorgio  
Garfield, NJ



## IT'S YOUR GAME!

I wish people who write to the Review complaining about ratings on cards would just take the advice of Kevin Anderson. I quote: "If you don't like them [the ratings], change them yourself." If people would just realize that the game they purchased is their own game, and they can do with it what they wish.

As long as you enjoy playing the game anyway you want, I say go right ahead. S-O-M doesn't have to be played just for statistical accuracy; it is supposed to be played for enjoyment, which means altering cards if you wish.

I also have a few questions that maybe you can answer. In baseball, when an outfielder has on his card: "RF-4 [+2] CF-4, LF-4" does the [+2] apply when he is in center and left fields as well?

Secondly, does Harold Richman (S-O-M's creator) have any plans for putting number of games played and number of games played at each position on the back of the card?

One final point, concerning basketball. I think it can be made better than it already is if the "inside shot" and "rebound shot" column was divided into two separate columns. Does Mr. Richman have any plans for this? Players such as Wes Unseld and Paul Silas are fantastic on offensive rebound shots but are terrible when it comes to straight inside shots.

In conclusion I would just like to commend Mr. Richman for all the work he has done and for giving me the best "illness" around. As Ron Hickey put it, "...this isn't a game--this is a disease."

Bruce Zimmerman  
Omaha, NB

Editor's note: Yes, the throwing rating is the same regardless of the outfield position played. No word from S-O-M that it plans on putting number of games played on the cards.

## THANKS FOR THE ENJOYMENT

I would really like to say thanks to Harold Richman and all the people at the S-O-M factory for making four great games, which I have and enjoy very much.

I'm also waiting patiently for S-O-M Hockey.

I never realized how many S-O-M gamers there were until I read the Review. And thanks for the Review; I never knew of a game with a Review for it every month.

I would also like to ask the Review to keep up the Trivia section and no-hitters. So, thanks Harold Richman and Warren and Del Newell for hours of enjoyment.

Paul Everett  
Johnson, NY

## WANTS OLD TIMER SEASON PRINTED

I would like to request that S-O-M make an entire Old Timer season. Pick a season with a good pennant race and make all the teams. It is hard to appreciate an Old Timer team without seeing the competition they were up against.

1949 American League, 1951 and 1956 National League are good examples of tight pennant races. Or S-O-M could have the 1927 American League and have the Yankees win everything.

I think it might be a lot of fun.

Greg Gougian  
13 Hillcrest Road  
Squantum, MA

## ANOTHER POLL NEEDED

I did not subscribe to the Review when the last poll for Old Timer baseball teams was taken, and I have a few questions about the procedure.

Were the voters limited to selecting teams from the 1920-30 time period? Were you [the Review] contacted by the game company to see where the greatest interest was? Or did you poll subscribers to show the company that there was a great demand for expansion in the Old Timer set?

The reason I'm asking these questions is that I would like to see a Series B set from the 1900 and '10 era. I have written Harold Richman about this but failed to receive a personal response. Almost every month there is a letter in the Review concerning this subject, and I think something could be done to

(continued on back page)



## S-O-M League, Replay Scene...

22

MILWAUKEE BRAVES 1965 REPLAY - Conducted by Stan Awtrey, who calls the state of Georgia (the current home of the then-known Braves)...took six months to complete...95 per cent of games were played solitaire...Milwaukee lost one more game than in real-life, batted six points better and had almost the exact same team earned run average...Hank Aaron (.309, 45 doubles, 38 home runs, 109 RBI, 112 runs scored) and Joe Torre (34 doubles, 36 HRs, 93 RBI, .308) were co-MVPs...Eddie Mathews was the RBI leader (110) and tied Aaron for home run honors with 38. But Mathews hit only .270 and made many costly fielding miscues...biggest surprise was Frank Bolling, a second baseman who hit .282, socked 39 doubles and 15 homers...Ken Johnson was the best pitcher, posting 26-8 record with 2.74 ERA. He worked 71 more innings than his real-life 231, fanned 188 and walked only 48...Wade Blasingame, conversely, was terrible, going from 16-10 (3.76) real-life to 9-21 (4.59) in the replay...Replay team batting average was .262, compared to real-life .256, while ERA was identical to real-life at 3.52...Team record was 86-76.

\*\*\*\*\*

MOE'S SOLD LEAGUE - Run by David Moser of Hickory, NC...used eight baseball teams from 1976 cards, four teams from each league...60-game schedule, basic version used; solitaire replay...Dave Winfield won batting title, edging out Bake McBride of St. Louis by a point, .343 to .342, and also led N.L. in home runs (17) and RBI (48) leading San Diego to surprising first-place finish...Baltimore edged Oakland to capture A.L. title...Ron Leflore of last-place Detroit was top A.L. hitter with .327 average...Lee May, Baltimore, was home run king with 16 and Reggie Jackson of Birds had 47 RBI...Bert Campaneris of A's swiped 45 bases in only 60 games...Rudy May of Baltimore had superlative 12-1 record, while Vida Blue of A's was 11-4 and Frank Tanana of California 10-5...Randy Jones of San Diego was N.L.'s top pitcher with 11-3 record, 2.07 ERA...Highlights included Pittsburgh's John Candelaria no-hitting San Diego, giving up only two walks, and San Diego turning the tables later on the Bucs, winning a 25-inning marathon...In the World Series, Baltimore fell to the surprising Padres in seven games.

Standings:

National	Won-Lost	GB	American	Won-Lost	GB
San Diego	34-26	-	Baltimore	35-25	-
Los Angeles	31-29	3	Oakland	33-27	2
St. Louis	29-31	5	California	28-32	7
Pittsburgh	26-34	8	Detroit	24-36	11

\*\*\*\*\*

'THAT' LEAGUE - Stands for T(omjanovich), H(ayes), A(bdul-Jabbar) and T(hompson), most influential stars of face-to-face basketball league that's currently in third season...eight coaches play basic version of game...22 teams were divided up among coaches--with ABA dispersal draft being held about quarter of way through season...Artis Gilmore, for instance, went to Phoenix and proceeded to pour in 41.9 points per-game--which didn't help the Suns' overall record that much, nor qualify Gilmore for the scoring crown...Commissioner David Smalley guided Houston to the title in the three-division league, with the Rockets coming out of second-place in the Hayes Division to capture the playoffs...New Orleans, another division runnerup, met and lost to Houston in the finals, dropping the last game, 109-107...Pistol Pete Maravich averaged 31.1 points for the Jazz...Kansas City, led by the one-two punch of Nate Archibald (21.4) and Jimmy Walker (19.9) won the DeBusschere Division...Bill Walton averaged 16.6 points, 15.1 rebounds for Portland, which had three other players crack 20 points a game--Lloyd Neal (21), Geoff Petrie (20.5) and Sidney Wicks (26.4)...Boston squeezed into fourth, thanks to the rebounding of Dave Cowens and Paul Silas...Indiana got 30.8 points per game from Billy Knight...Earl Monroe of the N.Y. Knicks led league in scoring with 32.2 average...Jabbar, of Lakers, averaged 31.6



points and 15.3 rebounds...Moses Malone went to L.A. in draft--but it was too late to help much...Seattle, led by Fred Brown (26.4), Leonard Gray (20.7) and Bob Love, won Hayes Division...Lack of board strength hurt in playoffs, however, as Sonics bowed out in first round...Houston featured seven players in double figures, headed by Rudy Tomjanovich (30.6) and Calvin Murphy (19.2)...San Antonio had up-and-down season, once losing by 15 points after holding 26-point halftime advantage...Julius (Dr. J) Erving was one-man gang for N.Y. Nets, averaging 27.9 points and leading team in rebounding...Philadelphia won Tomjanovich Division, as George McGinnis, Fred Carter, Steve Mix and Jim Price were big guns for coach John Falck...Price came from Milwaukee, in exchange for Doug Collins, in a key trade...Denver was sparked by Ralph Simpson, although David Thompson (20.8) had so-so season...Elvin Hayes (20.4) and Phil Chenier (24.7) were main sparklers for Washington...Bob McAdoo (28.1) and Jim McMillian (26.4) exploded frequently for Buffalo, which was a sad case when it came to defense...Cleveland got Marvin Barnes in draft and he averaged 30 points, forming with Jim Chones (22.7) and Dick Snyder (21.3) a three-pronged scoring punch...Bob Lanier averaged 30.8 points for Detroit, but ABA acquisition Ron Boone was a flop.

## Standings and leaders:

<u>DeBusschere</u>	<u>Won-Lost</u>	<u>Hayes</u>	<u>Won-Lost</u>	<u>Tomjanovich</u>	<u>Won-Lost</u>
Kansas City	59-21	Seattle	56-24	Philadelphia	57-23
New Orleans	57-23	Houston	51-29	Denver	52-28
Portland	49-31	San Antonio	41-39	Washington	49-31
Boston	48-32	N.Y. Knicks	40-40	Buffalo	43-37
Indiana	44-36	Chicago	25-55	Cleveland	37-43
N.Y. Nets	40-40	Phoenix	17-63	Atlanta	21-59
Golden State	37-43	Milwaukee	13-67	Detroit	19-61
Los Angeles	25-55				

Scoring

Monroe (NYK)	32.2	Knight (IND)	30.8
Jabbar (LA)	31.6	Lanier (DET)	30.8
Maravich (NO)	31.1	Tomjanovich (HOU)	30.6

Rebounding

Jabbar (LA)	15.3
Walton (PORT)	15.1
Cowens (BOS)	14.9
McGinnis (PHI)	14.6
Silas (BOS)	14.0

\*\*\*\*\*

SOUTHFIELD ALL-STAR LEAGUE - A two-manager baseball league conducted by Cary and Brian Wolf of Southfield, MI...best players from Hall of Fame A and B teams, 1904 Chicago Cubs and 1961 Detroit Tigers were included in replay that went 162 games...Cary's team emerged triumphant, by a six-game margin...Babe Ruth hammered 54 home runs and drove in 113 runs for the winners, who also featured Mel Ott (40 home runs), Joe Jackson (.362), George Sisler (96 stolen bases), Cy Young (19-11), Christy Mathewson (18-14) and Sandy Koufax (387 strikeouts)...Pacing Brian to a 78-84 record were the likes of Joe DiMaggio (39 HRs, 115 RBI), Nap Lajoie (.370, league's top hitter), Ty Cobb (74 steals), Mike Marshall (20-13), Rube Waddell (19-16, 293 strikeouts) and Carl Hubbell (7 shutouts).

## Leaders:

<u>Home Runs</u>	<u>RBI</u>	<u>Average</u>
Ruth (CW) 57	DiMaggio (BW) 115	Lajoie (BW) .370
Ott (CW) 40	Ruth (CW) 113	Jackson (CW) .362
DiMaggio (BW) 39	Dickey (CW) 102	Keeler (CW) .344
T. Williams (BW) 28	Ott (CW) 100	Sisler (CW) .340
Lajoie (BW) 28	Hornsby (CW) 98	Hornsby (CW) .339

\*\*\*\*\*

## The Review Staff

Editors: Warren Newell (Otsego, MI), Del Newell (Kalamazoo, MI).  
 Production: Karen and Mary Newell.  
 Printing: Oliver & Tobias (Kalamazoo, MI).



Strat-O-Matic Review  
P.O. Box 27  
Otsego, Michigan 49078

BULK RATE  
U.S. Postage  
PAID  
Permit No. 32  
OTSEGO, MICH.

THIRD CLASS

If the number before your name reads 11/77 this is the last issue of your current subscription. If you wish to renew your subscription, check number of months desired below and enclose proper amount (check or money order; please no coins). Send renewals to address listed above in left-hand corner.

\_\_\_\_\_ 3 months, \$1.50; \_\_\_\_\_ 6 months, \$2.75; \_\_\_\_\_ 1 year, \$5.10.

Note that no old Strat-O-Matic Directories are available. A new Directory is currently being prepared, but please do not send in for it until being notified of its availability.

\*\*\*\*\*

## Readers Roll 'Em

(Continued from page 21)

make our hopes a reality. I thought that the teams suggested by Ray Vanderhoff in the August issue were very representative of the best teams we are missing from this period.

I wonder whether other Old Timer fans such as Jim Elliott or Bruce Hesselback have expressed interest in such an idea? I'm hoping that the Review could run another poll to show gamers' interest in this area, and then show the results to S-O-M. If this isn't possible, perhaps a petition could be circulated among interested parties. In any case, I'd like to hear your response because it's obvious you are interested in progressive ideas.

Tom Meyers  
3001 W. Grace St.#3  
Richmond, VA 23221

Editor's note: S-O-M asked the Review to poll readers for which teams were desired from the 1920-30 period--and then it acted on the basis of the response. As of this writing, S-O-M has not revealed any plans for new Old Timer card sets. More teams (a set) might be in order from the 1940-50 period.